



# SMARTRACK

GLOBAL POSITIONING TRACKING SYSTEM

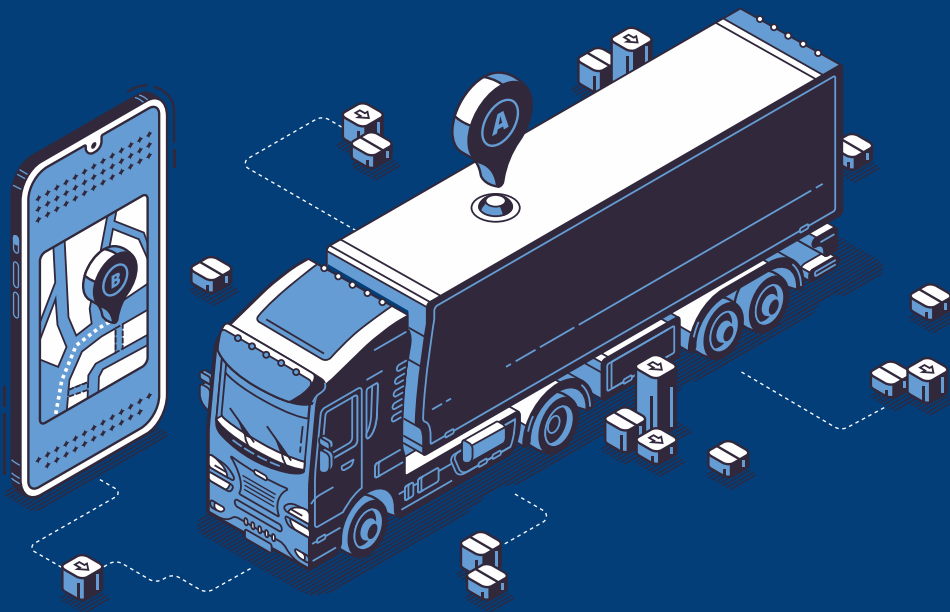


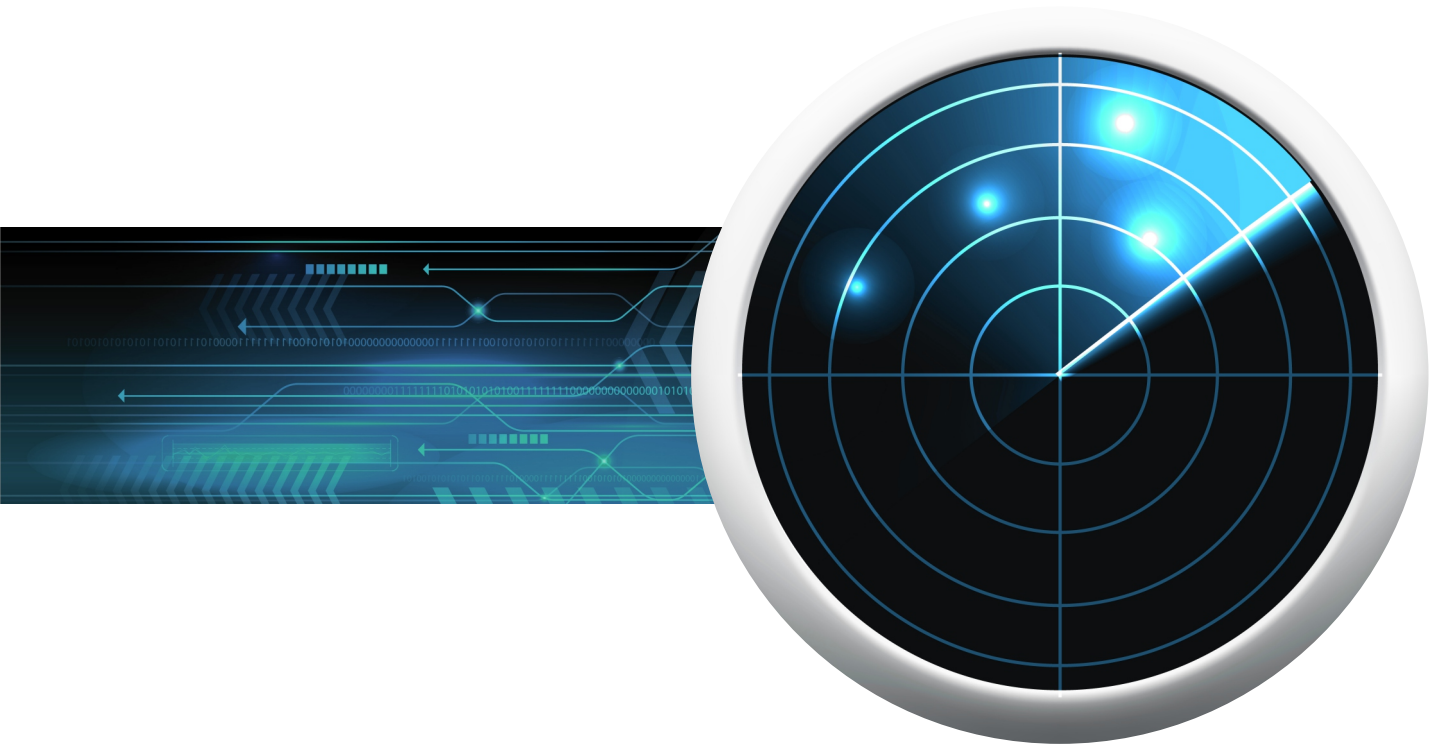
« GPS »



**SmarTrack**  
AGILE ASSET TRACKING & MANAGEMENT

When pin point location tracking is required the SmarTrack GPS Tracking system powered by 3Arc provides the perfect solution. A multitude of tracking options and devices creates hundreds of possible uses that make business much more efficient. SmarTrack GPS's two way communication system, GEO fencing, alerting, health monitoring and global reach allows organizations to monitor people and assets anywhere around the world 24 hours a day, 365 days a year.





## SMARTRACK GPS FLAVORS

SmarTrack GPS features four sub-products, which can be integrated into the software package.

### **MILITARY DEFENSE VERSION**

The DOD version provides the ability to track troops, rolling stock and assets around the globe, instant real-time access allows commanders to plan the arrival of troops and logistical supplies for training and combat.

### **LAW ENFORCEMENT VERSION**

The LEO version provides the ability to track police personnel, vehicles and assets in real-time. Our two piece fleeing vehicle system increases community safety as police do not have to pursue vehicles through crowded streets.

### **COMMERCIAL**

Businesses have thousands of people, assets and products that require one central global tracking system to visualize thousands of moving pieces. SmarTrack will provide 100 percent confidence that your JIT logistics operations are accurate and predictable for you and your customers.

### **PUBLIC SAFETY**

Venerable citizens, loved ones with aging challenges, parole tracking, children and animals may require specialized location tracking. Our GPS solutions track people and animals in any situation, 2 way SOS button allows you to reach out anytime.

**PC Based / Mobile Devices / Client Server/ Cloud**



# CONFIGURATIONS

## Purchase Configurations

SmarTrack GPS comes with scalable purchase options and devices.

### Devices:

- GPS Two Way Communication SOS Buttons
- Plug in trackers (UPS, AC, In Line Power Adaptor and 12V Lighter Adaptor)
- ODB Port
- Long Life Magnetic Container Tracker
- Bluetooth earpiece for tracking heart rate, core body temp and pulse live

### Purchase:

- Hardware
- Software
- Local or Global SIM Service
- Mapping
- Support Center

## Platform Configurations

SaaS

Cloud hosted and supported

On site hosting





## Product Features

- Personnel Tracking
- Equipment Tracking
- Animal Tracking
- Property Management
- Shipping Container Tracking
- Parole Management
- Medical and Mental Health Tracking
- Child Location Monitoring
- Inventory Management
- Law Enforcement Tracking
- Patient Tracking
- Staff Tracking
- Asset Visibility Reporting
- Critical Asset Monitoring



## Specialized Capabilities

- Press to talk
- GEO Fencing
- Point of Interest
- No go area
- Step by step history
- Driver behavior monitoring
- Automatic calling
- Alerts by email, text and call
- Departure, check point and arrival alerts
- Call recording and playback



## Human Health Monitoring

- Track heart rate
- Track blood pressure
- Track Core body temperature
- Report data live
- Alert when abnormal





Williams Software Associate Corp. is dedicated to the development of innovative software and hardware enterprise systems that feature intelligent business solutions for the Private, Public and Government sector. Our high quality services and software automate tasks that otherwise waste human efforts. WSA was founded in 2005 and is based in Raleigh, NC.



[wsacorp.us](http://wsacorp.us)

919.803.0788